



rettenmeier[®]

INDUSTRIAL WOOD

RETTENMEIER® PREMIUM OF WOOD

Our product selection is as multifarious as the wood itself. In keeping with our values, we strive to offer a range that meets the needs of our customers and the market. **Consistently excellent quality. Precisely customized. You can count on rettenmeier® always.**

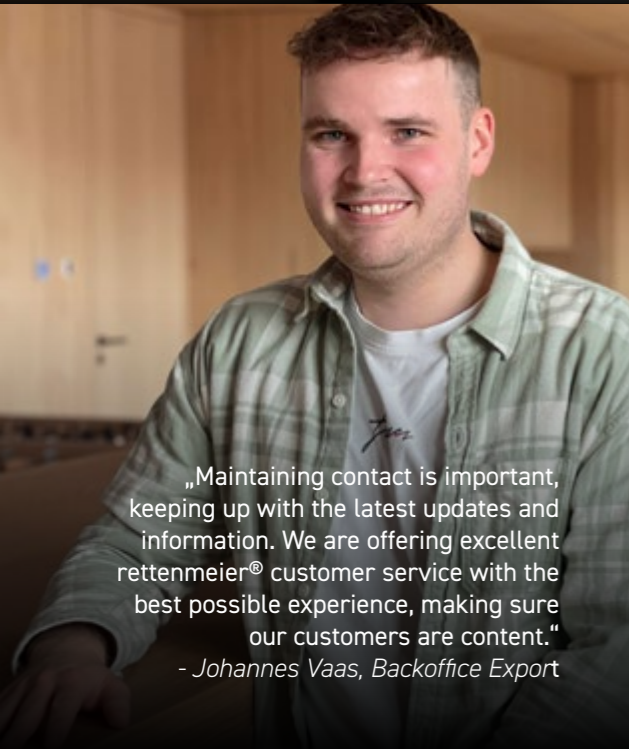
MORE
HERE



**TOGETHER WE
CAN ACHIEVE
MORE.
TEAMWORK IS
THE KEY TO
SUCCESS.**



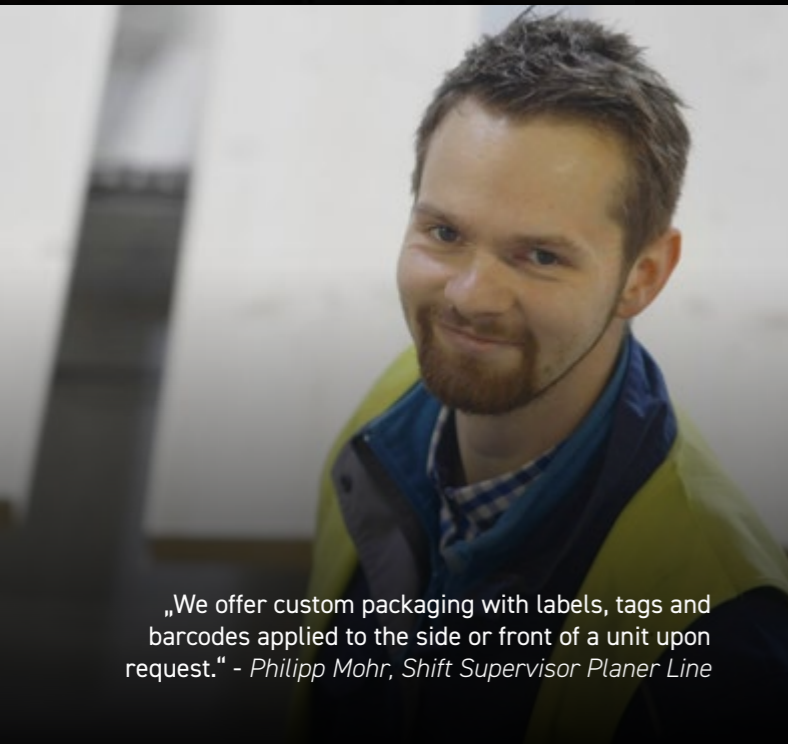
„Tap into the growing global demand for sawn timber products and unlock new possibilities for your business with our expertise. We are here for you.“
- Valentina Wolfrum, Head of Export



„Maintaining contact is important, keeping up with the latest updates and information. We are offering excellent rettenmeier® customer service with the best possible experience, making sure our customers are content.“
- Johannes Vaas, Backoffice Export



„We are working hard to deliver the goods in the shortest possible time.“
- Karsten Sachse, Truck Driver



„We offer custom packaging with labels, tags and barcodes applied to the side or front of a unit upon request.“ - Philipp Mohr, Shift Supervisor Planer Line



„By leveraging our ample storage capacities, railway access at all our plants, and our modern fleet, we can supply with maximum flexibility and reliability. Furthermore, we have forged strong relationships with shipping companies to guarantee the cargo is delivered to any destination.“ - Manuel Heide, Head of Logistics / Transport Manager

14

SAWN TIMBER

16

PLANED TIMBER


18

PACKAGING TIMBER

SAWN TIMBER

PLANED TIMBER

PACKAGING TIMBER



HIGH-TECH PRODUCTION

On our brand new production lines, we process wood into commodities according to **customer requirements**, with a strong operational performance, the best possible output and high quality. Precisely defined, environmentally friendly solutions for a sustainable future.

**MORE
HERE**



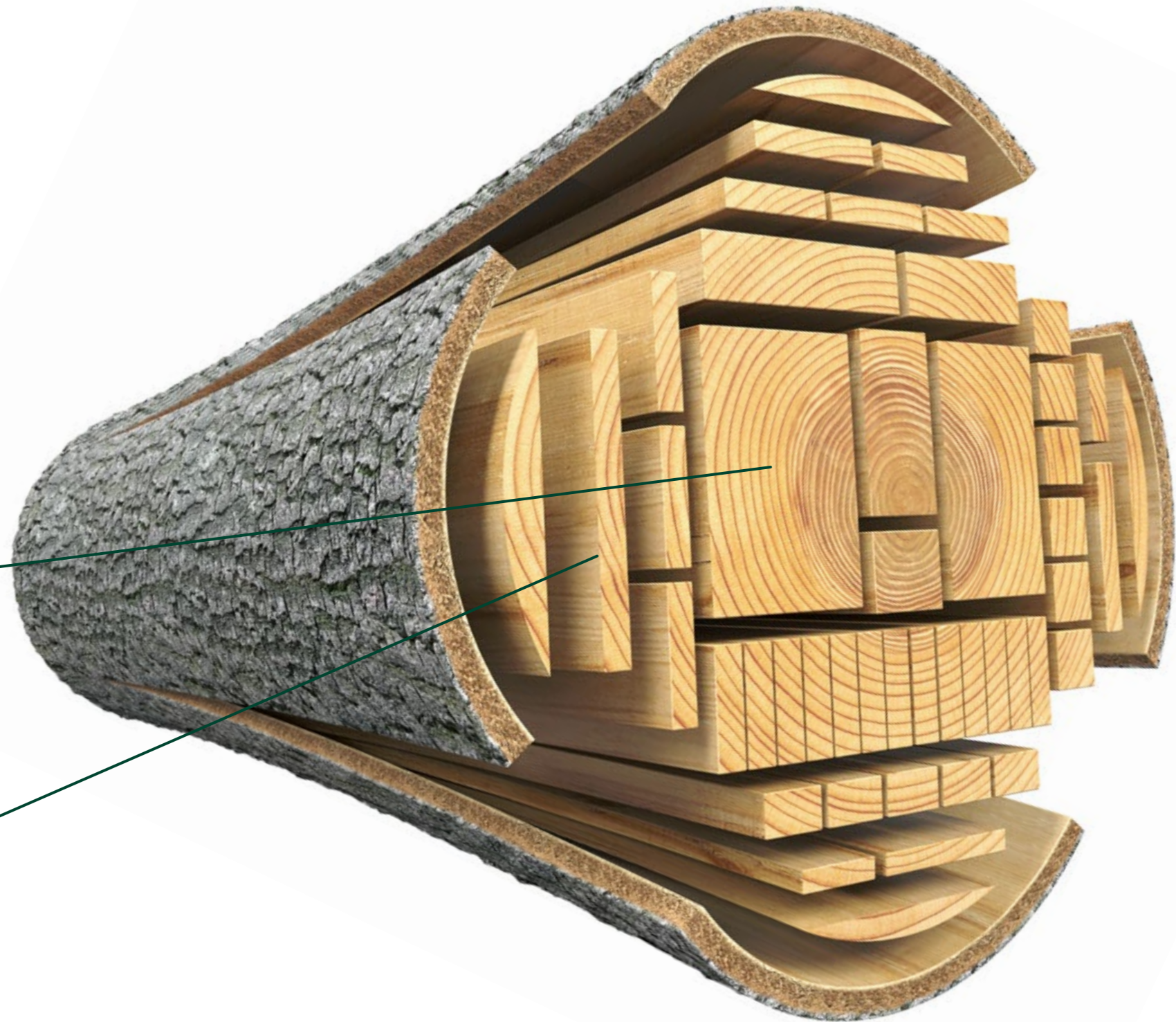
OPTIMIZED SAWING THE BEST OUT OF A SINGLE LOG

Our sawing line cuts the centre products along with sideboards in one run.

The 3D-scanning process allows for the most efficient use of each log based on a cutting pattern, resulting in 100 % value.

CENTRE PRODUCTS

SIDEBOARDS



**MORE
HERE**



COMMIT TO QUALITY

Our certifications ensure that our products meet all applicable standards and regulations for quality management. You can find our IPPC certificate, strength graded sawntimber certificate, CE certificate, and more on our homepage.

CONSTANT QUALITY

Our equipment is extremely precise, allowing us to meet the exact dimensional tolerances that are required in the market.

We have a comprehensive quality management system in place, which includes visual sorting of the boards with advanced scanner technology and our skilled staff.

**MORE
HERE**



A large industrial facility with a corrugated metal exterior and a complex steel truss roof structure. The facility is filled with numerous tall stacks of light-colored, kiln-dried lumber, organized into neat rows. The sky is clear and blue. The company name 'MAHILD DRYING TECHNOLOGIES' is visible on the building's facade.

MAHILD
DRYING TECHNOLOGIES

EFFICIENT DRYING

In our drying facilities, the material is dried to the requested moisture content and inspected thorough subsequently to meet the required quality at the end.

Our advanced channel dryers allow us to feed the sawn timber in any length and run a fully automated throughput process with maximum efficiency. **To top it off, we use only the heat from our biomass power plants for drying operation, making it an environmentally friendly solution.**

SAWN TIMBER



SAWN TIMBER

Our product range offers an extensive selection of options, including rough sawn material for solid construction timber, laminations for glulam, sawn timber for the packaging industry and for planing mills, wood panels and planks, beams and formwork, just as custom cut timber, and much more.

**MORE
HERE**



SAWN TIMBER ROUGH, KILN DRIED

PRODUCTION RANGE OF OUR SITES

	from 2024				
	Wilburgstetten, Germany	Hirschberg, Germany	Ramstein-Miesenbach, Germany	Inčukalna, Latvia	Liptovský Hrádok, Slovakia
Thickness mm	22 - 120	24 - 125	16 - 145	22 - 120	17 - 90
Width mm	56 - 312	80 - 300	38 - 300	56 - 312	75 - 270
Lengths m					
Spruce	2,00 - 6,00	3,50 - 5,00	2,00 - 5,00	2,10 - 6,00	1,50 - 5,00
Pine	2,00 - 5,00		2,00 - 5,00	2,10 - 6,00	
Douglas fir			2,00 - 5,00		
Larch			2,00 - 5,00		

GRADES

Spruce

GRADE 1	GRADE 2	GRADE 3	GRADE 5
<ul style="list-style-type: none"> stain free insect holes free sound and tight knots only single resin pockets square edged no checks and splits 	<ul style="list-style-type: none"> light wane mill run / sawn falling (incl. grade 1 and grade 3) light discoloration limited checks and splits small resin pockets decay free 	<ul style="list-style-type: none"> small wane medium discoloration checks and splits resin pockets 	<ul style="list-style-type: none"> wane discoloration worm / insect infestation nail holding

Pine

GRADE 2	GRADE 5
<ul style="list-style-type: none"> mill run / sawn falling / rough (incl. grade 1 and grade 3) light wane limited blue stain limited brown stain decay free limited checks and splits no dead knots live knots sound bark pocket 	<ul style="list-style-type: none"> wane discoloration worm / insect infestation nail holding

Douglas fir

GRADE 2	GRADE 5
<ul style="list-style-type: none"> mill run / sawn falling / rough (incl. grade 1 and grade 3) light wane limited blue stain limited brown stain decay free limited checks and splits no dead knots live knots sound bark pocket 	<ul style="list-style-type: none"> wane discoloration worm / insect infestation nail holding

SAWN TIMBER

PLANED TIMBER

SPRUCE

PACKAGING TIMBER

PINE

DOUGLAS FIR

PLANED TIMBER

PLANED TIMBER

Our planed timber is being supplied across the world due to its multiple and versatile uses. We offer precise length trimming, requested finishing and adapted packaging to meet the needs of our customers. The growing demand for our products speaks of their quality and reliability.

**MORE
HERE**



PLANED TIMBER S4S, KILN DRIED

PRODUCTION RANGE OF OUR SITES

	Wilburgstetten, Germany	Hirschberg, Germany	Ramstein-Miesenbach, Germany	Inčukalns, Latvia	Liptovský Hrádok, Slovakia
Thickness mm	11 - 94	20 - 110	15 - 100	15 - 120	12,5 - 35
Width mm	28 - 195	80 - 300	45 - 300	80 - 325	95 - 200
Lengths m	1,80 - 5,10	2,00 - 5,10	1,80 - 5,00	2,40 - 6,00	2,00 - 5,00

Grade	Dimension mm / in	Lengths mm / ft
-------	-------------------	-----------------

Boards

19 / 1"	89 / 4"	1830 / 6'	2440 / 8'	3050 / 10'	3660 / 12'	4270 / 14'	4880 / 16'
19 / 1"	140 / 6"	1830 / 6'	2440 / 8'	3050 / 10'	3660 / 12'	4270 / 14'	4880 / 16'
19 / 1"	184 / 8"	1830 / 6'	2440 / 8'	3050 / 10'	3660 / 12'	4270 / 14'	4880 / 16'
19 / 1"	235 / 10"	1830 / 6'	2440 / 8'	3050 / 10'	3660 / 12'	4270 / 14'	4880 / 16'
19 / 1"	286 / 12"	1830 / 6'	2440 / 8'	3050 / 10'	3660 / 12'	4270 / 14'	4880 / 16'

Grade	Dimension mm / in	Lengths mm / ft
-------	-------------------	-----------------

Dimension Lumber, American Lumber Standard (ALS)

NO 2	38 / 2"	89 / 4"	1830 / 6'	2440 / 8'	3050 / 10'	3660 / 12'	4270 / 14'	4880 / 16'
	38 / 2"	140 / 6"	1830 / 6'	2440 / 8'	3050 / 10'	3660 / 12'	4270 / 14'	4880 / 16'
	38 / 2"	184 / 8"	1830 / 6'	2440 / 8'	3050 / 10'	3660 / 12'	4270 / 14'	4880 / 16'
	38 / 2"	235 / 10"	1830 / 6'	2440 / 8'	3050 / 10'	3660 / 12'	4270 / 14'	4880 / 16'
	38 / 2"	286 / 12"	1830 / 6'	2440 / 8'	3050 / 10'	3660 / 12'	4270 / 14'	4880 / 16'

Grade	Dimension mm / in	Lengths mm / in
-------	-------------------	-----------------

Precision End Trimmed Lengths (PET)

NO 2	38 / 2"	89 / 4"	2353 / 92 5/8"	2657 / 104 5/8"	2962 / 116 5/8"
	38 / 2"	140 / 6"	2353 / 92 5/8"	2657 / 104 5/8"	2962 / 116 5/8"

Grade	Dimension nominal mm	Dimension actual mm	Lengths mm
-------	----------------------	---------------------	------------

CLS, UKCA marking

C18	50 x 75	38 x 63	2400	2700	3000	4200	4800
	50 x 100	38 x 89	2400	2700	3000	4200	4800
	50 x 150	38 x 140	2400	2700	3000	4200	4800

Grade	Dimension mm	Lengths mm
-------	--------------	------------

Carcassing

C24	45 / 72	45	2400 - 4800
	45 / 72	70	2400 - 4800
	45 / 72	95	2400 - 4800
	45 / 72	120	2400 - 4800
	45 / 72	145	2400 - 4800

Carcassing

C24	45 / 72	170	2400 - 4800
	45 / 72	195	2400 - 4800
	45 / 72	220	2400 - 4800
	45 / 72	245	2400 - 4800

PACKAGING-TIMBER

PACKAGING TIMBER

Our packaging timber is available in full or ready-to-use lengths, with the option of fresh-cut or kiln-dried. We can also produce timber to your exact specifications.

**MORE
HERE**



PACKAGING TIMBER

Sideboards, fresh cut

	70 mm	75 mm	78 mm	90 mm	95 mm	98 mm	115 mm	135 mm	143 mm
13 mm	X								
15 mm		X							
16 mm				X					
17 mm		X	X		X	X	X	X	
22 mm		X				X			X

Lengths: 2 - 5 m, 50 cm upward

Sideboards, kiln dried

	75 mm	78 mm	80 mm	98 mm	100 mm	115 mm	120 mm	135 mm	140 mm	150 mm	160 mm	180 mm	200 mm
15 mm	X												
17 mm		X		X		X		X					
19 mm					X								
22 mm	X												
23 mm			X		X		X		X	X	X	X	X

Lengths: 2 - 5 m, 50 cm upward

Beams, fresh cut

	75 mm	95 mm	145 mm
75 mm	X	X	X
95 mm		X	

Lengths: 2 - 5 m, 50 cm upward

Beams, kiln dried

	79 mm	98 mm	99 mm
79 mm	X		X
98 mm		X	

Lengths: 2 - 5 m, 50 cm upward

GRADES

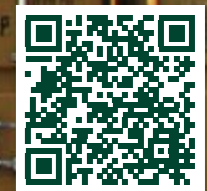
GRADE 8	GRADE 9
<ul style="list-style-type: none"> • medium wane • discoloration • worm / insect infestation • nail holding 	<ul style="list-style-type: none"> • wane • discoloration • worm / insect infestation • nail holding

RET TENMEIER® SERVICE WE PROVIDE A RELIABLE LOGISTICS SOLUTION FOR ALL YOUR NEEDS

We use our own fleet of vehicles and a wide-ranging national and international transport network to deliver our products on a fast, flexible and efficient way.



**MORE
HERE**





A GREENER WAY TO MOVE AROUND

The railway infrastructure guarantees that our sites have dependable and efficient connections. This not only decreases our carbon footprint by taking cargo off the roads, but it also enhances the effectiveness of our freight transportation.



ENGAGING IN CLIMATE CHANGE MITIGATION

1. The timber we use as a raw material absorbs the detrimental CO₂ from the atmosphere.

2. We transform the wood sustainably into CO₂ holders and thereby prolong the retention of the contained carbon. For instance, constructing a low-energy house of timber can reduce emissions by up to 80 tonnes of carbon dioxide.

3. Our rettenmeier® PREMIUM OF WOOD is a great alternative to materials such as steel or concrete, which produce large amounts of CO₂ during their manufacture. It is a more sustainable option that can help reduce emissions and conserve energy.

MORE
HERE



ZERO-WASTE-APPROACH

↪ 100 % ADDED VALUE
+ 100 % APPRECIATION

In keeping with our dedication to **rettenmeier®'s zero waste policy**, we make sure to use all by-products of sawing and bark in a sustainable manner. This guarantees that our wood resources are used to their fullest extent and are 100 % utilised.



MORE
HERE



PRESERVING OUR FORESTS FOR FUTURE GENERATIONS

The continued existence of our domestic forests is of paramount importance to us. Not only do they provide us with raw material, but they also serve as a habitat and recreational area for plants and animals. **Consequently, it is essential to practice sustainable forestry and safeguard the vitality and vigor of the forest ecosystem.**

**MORE
HERE**



OUR SITES

RAMSTEIN-MIESENBACH GERMANY



👤 ≈ 225 EMPLOYEES
400.000 m² ESTABLISHMENT
650.000 m³ CAPACITY
+ 120.000 t PELLETS
WOOD SPECIES: SPRUCE, PINE,
DOUGLAS FIR, LARCH

BURGBERNHEIM GERMANY



👤 ≈ 55 EMPLOYEES
79.000 m² ESTABLISHMENT
55.000 m³ CAPACITY
WOOD SPECIES: SPRUCE, PINE

INČUKALNS LATVIA



👤 ≈ 260 EMPLOYEES
327.000 m² ESTABLISHMENT
800.000 m³ CAPACITY from 2024
WOOD SPECIES: SPRUCE, PINE

HIRSCHBERG GERMANY



👤 ≈ 290 EMPLOYEES
420.000 m² ESTABLISHMENT
750.000 m³ CAPACITY
WOOD SPECIES: SPRUCE

LIPTOVSKÝ HRÁDOK SLOVAKIA



👤 ≈ 280 EMPLOYEES
190.000 m² ESTABLISHMENT
400.000 m³ CAPACITY
+ 65.000 t PELLETS
WOOD SPECIES: SPRUCE

WILBURGSTETTEN GERMANY



👤 ≈ 490 EMPLOYEES
620.000 m² ESTABLISHMENT
800.000 m³ CAPACITY
WOOD SPECIES: SPRUCE, PINE



**MORE
HERE**



rettenmeier[®]
INDUSTRIAL WOOD

Rettenmeier Holding AG
Industriestraße 1 | 91634 Wilburgstetten | Germany
Phone: +49 (0) 9853 338-0 | Email: info@rettenmeier.com



www.retttenmeier.com